

Artweger®

The fine ART of bathing



Artweger
360

*Everything revolves
around the shower*





Artweger 360

Everything revolves around the shower.

Welcome to Artweger. With the new shower series ARTWEGER 360 you will find a **complete line** of showers that will fulfill all your wishes.

The Artweger 360 has a suitable solution for all room sizes and shapes. With the innovative 360° TWIN hinge the line provides the greatest flexibility and comfort which is a main criterion in small rooms.

In this way the Artweger 360 makes it easy for you to realize your individual bathroom ideas stylishly. Fully in accordance with your taste and your concept.

... guaranteed quality

... three hundred and sixty degrees

... superior functionality

... barrier-free throughout

... individually dimensioned



Artweger
360

Everything revolves around ...

... unique design

... incomparable comfort

... wide selection

Everything revolves around the **wide selection.**

In the Artweger 360 range you will find exactly the shower that matches your style and fits your bathroom. With a true highlight: the 360° TWIN hinge! Due to the **360° TWIN hinge** the doors can be opened to a maximum of 180 degrees inwards or outwards depending on the bathroom plan! Nothing stands in the way anymore!



Frameless

The frameless models of the ARTWEGER 360 stand out due to their transparent elegance with glass surfaces that reach from wall to wall. The glass panels and doors are held firmly in place by unobtrusive wall fittings.



Partially framed

Continuous wall profiles provide great stability for your shower. The vertical silicone joints are covered by attractive trim strips.



Framed

To enable guidance of door elements a frame is necessary for sliding doors. In the Artweger 360 the doors run over narrow guide rails on the floor. That is why the upper guiding profile is especially unobtrusive and does not stand out.



Artweger 360



Swinging door *from page 12*

The winged doors of the Artweger 360 are a complete novelty. Due to the 360° TWIN hinge the door can be opened inwards and outwards to the wall!



Winged door *from page 12*

Folding doors are the classic type of doors. They open outwards up to 180°. Just as in the revolving doors these swing doors have a special raise and lower mechanism which enables easy opening and closing.



Sliding door *from page 50*

Sliding doors are elegant solutions which do not need any extra space to be opened. In the Artweger 360 these doors are guided on the floor. That results in special stability and smoothness.



Artweger 360 Walk In *from page 40*

Do you want to shower without a door? Then the Walk In models of Artweger 360 are the right ones for you. Anchored and/or movable side parts provide additional splash protection.



Folding door *from page 60*

Especially practical and barrier-free solutions for small rooms are doors which can be folded away. Thanks to the 360° TWIN hinge such shower doors can be folded individually in one direction or the other.



*Everything revolves around **three hundred and sixty degrees.***

The new **360° TWIN hinge** is an exceptional invention and makes solutions possible which couldn't be realized with a common hinge.

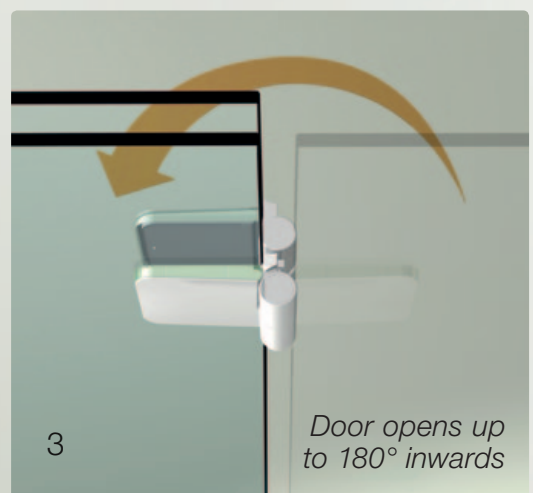
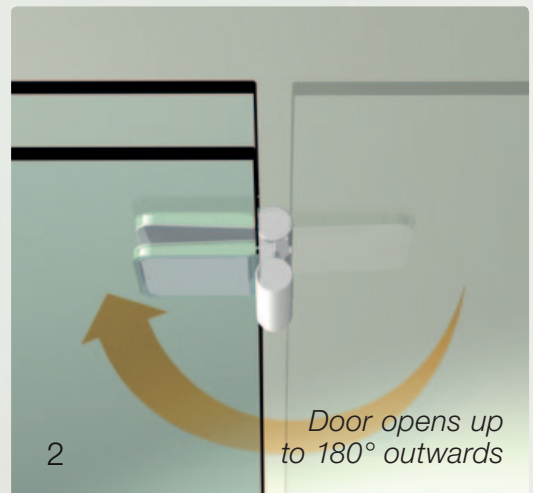
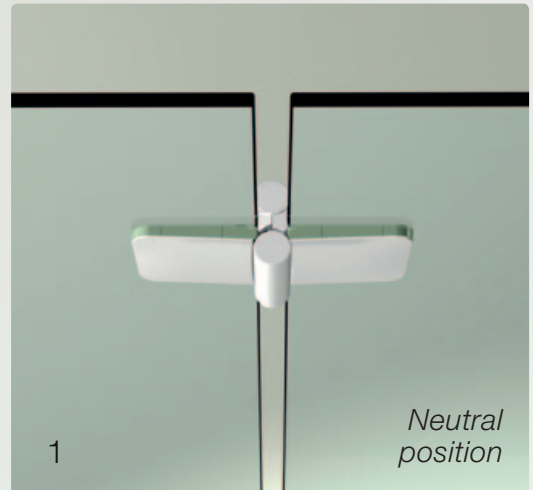
The hinge enables the door to be opened 180 degrees inwards or outwards until it is parallel to the anchored glass screen. In this way it provides more freedom of movement in the bathroom. The shower door will never stand in your way again. That is consistently barrier free work even in small bathrooms!

For you the Artweger 360 means, above all, comfort before and after showering. After showering it also has its advantages: the shower door is not in the way when you rinse off the shower.

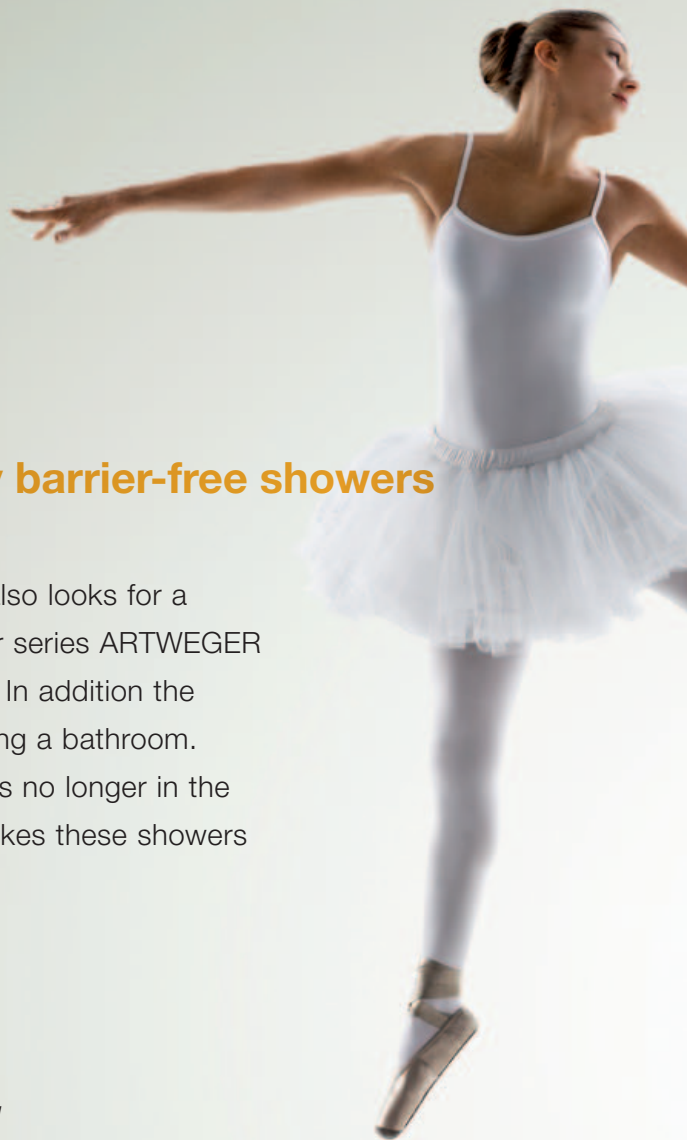


Artweger 360

The new 360° TWIN-hinge



With the new Artweger 360° TWIN hinge you can open your shower door inwards or outwards until it touches the side wall of the shower.



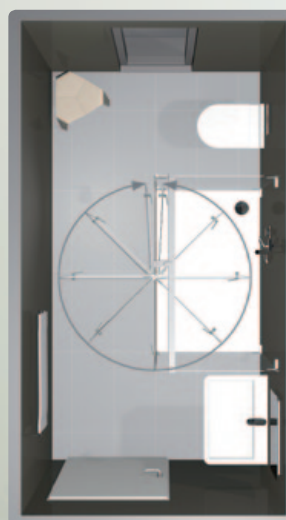
Everything revolves around **consistently barrier-free showers**

Whoever furnishes their house or apartment individually also looks for a bathroom that is special. Due to the variety of the shower series ARTWEGER 360 a suitable solution for every bathroom can be found. In addition the **360° TWIN hinge** provides greater flexibility when planning a bathroom. Because the doors revolve up to 360°, the shower door is no longer in the way. It is simply opened until it touches the wall. That makes these showers consistently barrier-free in the bathroom.

Planning example 1



In long, narrow bathrooms an open revolving door restricts free, full use of the space available because as a rule it only opens inwards or outwards up to 90°. Only the Artweger 360 revolving doors open 180° in both directions which means the empty space in the bathroom can be used to the full. When cleaning the shower the door is not in the way either.

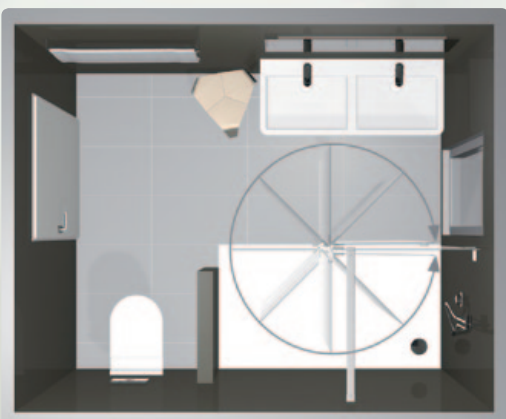


Artweger 360



Planning example 2

The Artweger 360 Walk In VARIO with its 360° revolving glass enables splash protection in niches as well as comfortable access. The clever glass door can be opened completely inwards or outwards when you want to get in.





Winged door attached on fixed part with side screen, partially framed, handle horizontal

WINGED AND SWINGING DOORS

Unique design and functionality are the outstanding features of the Artweger 360.

A special mix of materials for the fittings is the reason for its elegant appearance. Due to these materials an astonishing effect is created: The handles and hinges appear to float above the glass.

The functional highlight is the new **360° TWIN hinge** which can be opened inwards or outwards right up to the wall or to the anchored side wall of the shower. The advantages: the door does not stand in the way and access is barrier-free.



The hinges of the wing and swing doors present themselves in uniform design. Behind the design different functions are concealed which reveal their advantages depending on shower space and bathroom planning.





*Top:
Round shower with 2 swinging doors,
frameless, handle vertical,
Artweger shower tray Susanne*

*Bottom:
Round shower with swinging door,
partially framed, handle horizontal*



WINGED DOOR OR SWINGING DOOR

ROUND SHOWER

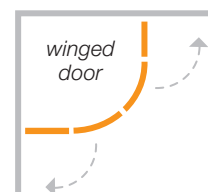
Round showers look especially elegant and in addition are space savers as they do not have any corners and angles. One practical advantage: they allow for a lot of space to shower in a small room. All fittings are mounted on the outside of the glass with tried and proven Artweger adhesion technology. That makes the shower especially easy to clean. You can choose between one or two wing doors depending on your taste and the situation in your bathroom.

Two doors



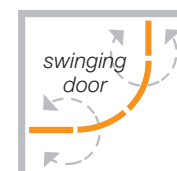
FRAMELESS, with winged or swinging door (fig. top left)

*Customized solutions, from 80x80 cm to max. 100x100 cm
Height: 200 cm, access width: 85-100 cm*



PARTIALLY FRAMED, with winged or swinging door

*Dimensions: 80x80 cm, 90x90 cm, 100x100 cm,
90x80 cm, 100x90 cm
Height: 200 cm, access width: 85-100 cm*

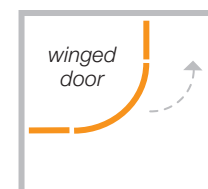


One door



FRAMELESS, with winged door

*Customized solutions, from 80x80 cm to 100x100 cm
Height: 200 cm, access width: 60-65 cm*



PARTIALLY FRAMED, with winged door (fig. bottom left)

*Dimensions: 80x80 cm, 90x90 cm, 100x100 cm, 90x80 cm, 100x90 cm
Height: 200 cm, access width: 60-65 cm*



Five-sided shower with winged door, partially framed, handle vertical, Artweger shower tray Sally

WINGED DOOR

FIVE-SIDED SHOWER

This is also a space saver and a good alternative to a round shower: the attractive five-sided shower. It is a full solution for small bathrooms and provides sufficient room to shower despite requiring minimal floor space.



FRAMELESS, with winged doors

*Customized solutions, 90x90 cm to 100x100 cm
Height: 200 cm, access width: 59-66 cm*



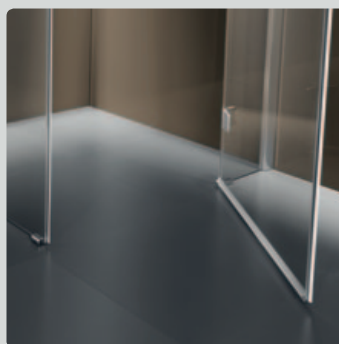
PARTIALLY FRAMED, with winged doors (fig. left)

*Dimensions: 90x90 cm, 100x100 cm
Height: 200 cm, access width: 59-66 cm*

Your choice

VARIO sealing system:

Whether you prefer the Artweger 360 with or without a surge bar is up to you. Choose between completely barrier-free access and improved splash protection. In the case of revolving or wing doors a raise and lower mechanism makes opening and closing the doors easier.



*VARIO sealing system:
You decide whether you want
100% flush to floor access
without a surge bar...*



*... or with an unobtrusive 12 mm
high surge bar for improved
water-tightness around the door.*



Winged door on stable part in a niche, partially framed, bow-shaped handle

WINGED DOOR OR SWINGING DOOR

IN AN ALCOVE

Also for alcoves the choice of a suitable door is very easy: Depending on where the faucet fittings are planned the stable part can be mounted left or right of the door. Apart from that you can choose if the door is to be mounted on the wall or on a stable glass part. The Artweger 360 offers the best possible solution in each case.

Door on stable part



FRAMELESS, with winged or swinging door

Customized solutions, max. width 100 cm

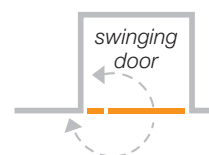
Height: 200 cm, access width: 68 cm



PARTIALLY FRAMED, with winged or swinging door (fig. left)

Dimensions: 75, 80, 90, 100 cm

Height: 200 cm, access width: 53-68 cm



ARTWALL



ARTWALL

RAPID RENOVATION: ARTWALL is a modern wall system for bathroom renovation. ARTWALL wall panels are adhered directly onto existing tiles or brick wall; time-consuming retiling is not necessary. ARTWALL was developed especially for wet rooms and therefore ideal for bathroom renovation. ARTWALL is also suitable as tub skirting for the TWINLINE.

Current colors and deco under
www.artweger.at/artwall





*Top:
Swinging door in niche without an anchored
side part, frameless, handle horizontal*

*Bottom:
Swinging door in niche with anchored part,
frameless, handle vertical,
Artweger shower tray Sabine*



SWINGING DOOR

IN AN ALCOVE

The Artweger 360 swinging door with the new 360° TWIN hinge can also be anchored directly to the wall. We recommend this solution for wide access especially with small niches. The large photo on the left shows a solution without an anchored part where the opened door reaches across the whole width of the niche.

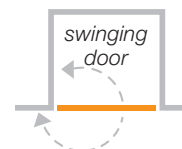
Door on wall, without anchored part



FRAMELESS, with swinging door (fig. top left)

Customized solutions, max. width 90 cm

Height: 200 cm, access width: up to 82 cm



Door on wall, without anchored part



FRAMELESS, with swinging door (fig. bottom left)

Customized solutions, max. width 140 cm

Height: 200 cm, access width: up to 68 cm





*Top:
Winged door in niche with 2 anchored parts, extra wide,
partially framed, handle vertical*

*Bottom:
Swinging door in niche with 2 anchored parts,
frameless, handle horizontal,
Fittings white, Artweger shower tray Simone*



WINGED DOOR OR SWINGING DOOR

IN AN ALCOVE

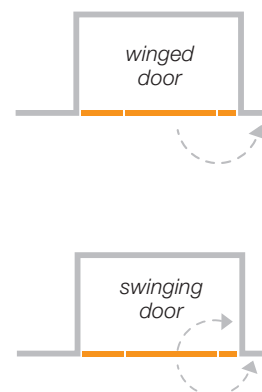
With the Artweger 360 you are able to realize perfect niche solutions in sizes from a width of 80 cm up to a large format shower with a width of 180 cm - for every case and each bathroom you can find a suitable door solution. The shower door with two anchored parts is convincing due to its balanced appearance. For especially wide niches an extra wide anchored part is installed. All doors are barrier free equipped with the VARIO sealing system (See page 17).

Extra wide: One door, two anchored parts



PARTIALLY FRAMED, with winged or swinging door (fig. top left)

*Dimensions: 140, 150, 160, 170, 180 cm
Height: 200 cm, access width: 63-68 cm*



One door, two anchored parts of equal width



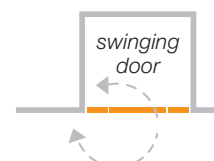
FRAMELESS, with winged or swinging door (fig. left)

*Customized solutions, max. width 140 cm
Height: 200 cm, access width: up to 63 cm*



PARTIALLY FRAMED, with winged or swinging door

*Dimensions: 90, 100, 120 cm
Height: 200 cm, access width: 53-68 cm*





2-part swinging door in niche with 2 anchored parts, frameless, bow handles

SWINGING DOOR

IN AN ALCOVE

If you are planning for a generous alcove, solutions with two doors and two anchored parts are an extremely elegant choice. The revolving doors with the 360° TWIN hinge can be opened both inwards and outwards and enable comfortable access to the shower without the doors taking up too much space when they are opened.

Two doors, two anchored parts



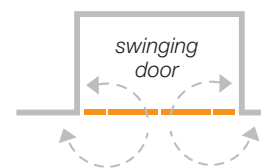
FRAMELESS, with swinging door (fig. top left)

*Customized solutions, max. width 180 cm
Height: 200 cm, access width: to 117 cm*



PARTIALLY FRAMED, with swinging door

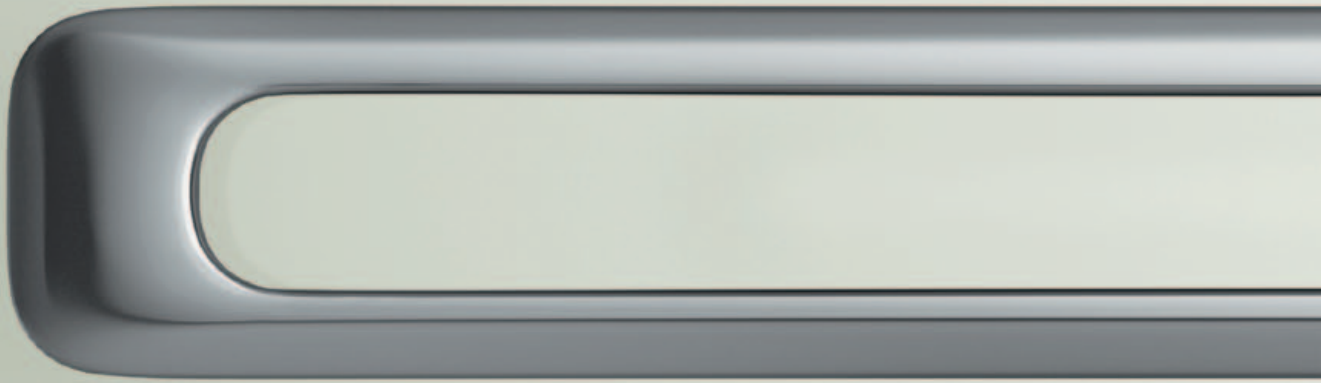
*Dimensions: 140, 150, 160, 170, 180 cm
Height: 200 cm, access width: 97-117 cm*



*Everything revolves around **unique design.***

Outstanding design can be recognized on hand of optimum interplay between form and function. With the Artweger 360 good design can be felt in the whole line as this interplay is consistent throughout the whole series. That helps you to furnish your bathroom in an especially attractive way no matter which model you choose. However the design is never restrictive but rather always remains light with all its elements in the foreground.

The fittings which are in an unobtrusive combination of chrome on the front and plastic in glass look on the sides create an astonishing effect: a flowing transition between glass and fittings. In this way all elements such as handles and hinges appear especially light and elegant.



BOW HANDLE



HORIZONTAL HANDLE

This is a question of personal preference. The ergonomic and optically perfect handles are available in four variations.



VERTICAL HANDLE

The generous vertical handle is distinguished not only by the inimitable design of the shower but also because it is anti-slip.

Artweger
360



KNOB

The narrow knob is on the inside of the doors in all models, it can also be used on the outside.



HINGE

Just like the handles, the hinges of the revolving and wing doors are in the same clean design and round off the harmonious appearance.



Winged door on anchored part with side wall, partially framed, horizontal handle, towel rail

WINGED DOOR OR SWINGING DOOR

DOOR + SIDE WALL

This classic shower provides generous access width and a lot of space to take a shower. Naturally as with all 360 models it is equipped with the VARIO sealing system of choice for either completely barrier-free access or with a small surge bar for improved splash protection (See page 17).



FRAMELESS, with winged or swinging door

Customized solutions, max. width 120 cm, side wall max. 100 cm

Access width: to 68 cm



PARTIALLY FRAMED, with winged or swinging door (fig. lower left)

Dimensions: door part 80, 90, 100, 120 cm, side wall 80, 90, 100 cm

Access width: 58-68 cm





Winged door on an anchored part with 2 side walls, frameless, bow handle

WINGED DOOR OR SWINGING DOOR

ON A STRAIGHT WALL

The Artweger 360 also provides an elegant solution for a combination of a door with two side walls of glass. All the fittings here, as in all other models, are affixed to the outside of the glass by means of a certified adhesion technique. This leaves the inner surfaces of the shower completely smooth and therefore incomparably easy to clean.

One door on an anchored part, two side walls



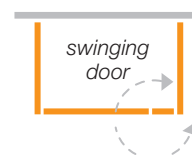
FRAMELESS, with winged or swinging door (fig. left)

*Customized solutions, max. width 100 cm, side screens max. 100 cm
Access width: to 68 cm*



PARTIALLY FRAMED, with winged or swinging door

*Dimensions: door part 90, 100 cm, side screens 90, 100 cm
Access width: 63-68 cm*



Technology and design

*Stabilizers which match
the design of the shower
provide great stability even
for large showers.*





*Top:
Winged door on anchored part with short side wall,
flush to the bathtub, partially framed, handle horizontal,
Artweger shower tray Simone*

*Bottom:
Winged door on an anchored part with swinging side wall,
not flush to bathtub, partially framed, handle vertical*



WINGED DOOR OR SWINGING DOOR

DOOR + SIDE WALL (on bathtub)

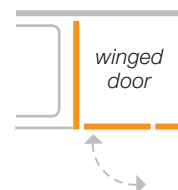
With the Artweger 360 you have a suitable model on hand for every bathroom. Here we show you how attractively special situations can be resolved. Especially practical is the shower with a short side wall: This can be set directly on top of an adjoining bathtub. The model with swinging side wall also provides a practical solution adjoining the bathtub.

Short side wall



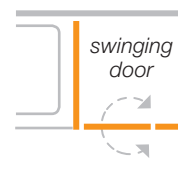
FRAMELESS, with winged or swinging door

*Customized solutions, max. width 100 cm, side screen max. 120 cm
Access width: to 68 cm*



PARTIALLY FRAMED, with winged or swinging door (fig. bottom left)

*Dimensions: 80, 90, 100 cm, side screen max. 120 cm
Access width: 58-68 cm*

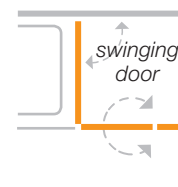


Swinging side wall



FRAMELESS, with swinging door

*Customized solutions, to max. 90x90 cm
Access width: to 68 cm
Model flush to or not flush to bathtub*



PARTIALLY FRAMED, with swinging door (fig. bottom left)

*Dimensions: 80x80 cm, 90x90 cm, 90x75 cm, 90x80 cm
Access width: 58-68 cm
Model flush to or not flush to bathtub*



Corner access with swinging doors, frameless, handle horizontal

WINGED DOOR OR SWINGING DOOR

CORNER ACCESS

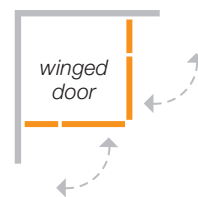
The Artweger 360 corner access shower stands out due to its symmetrical appearance. Both doors take up very little space when opened and provide comfortable access in the middle. Individual, customized solutions provide further possibilities according to your wishes.



FRAMELESS, with winged or swinging door (fig. left)

Customized solutions, to max. 100x100 cm

Access width: to 85 cm



PARTIALLY FRAMED, with winged or swinging door

Dimensions: 80x80 cm, 90x90 cm, 100x100 cm, 90x75 cm, 90x80 cm

Access width: 70-85 cm





*Top:
Round shower with wing door to side wall with cutout,
partially framed, handle vertical*

*Bottom:
2-part swinging door on anchored parts
with 2 sloping side walls, frameless, handle horizontal*



EVERYTHING REVOLVES AROUND

INDIVIDUAL CUSTOMIZATION

Customized solutions

For your very own special wishes in bathroom furnishings. Whether it is in a private home, in larger facilities or in hotels - with Artweger you can realize various special ideas quickly and professionally.

Cutouts, sloped walls, and special sizes

Whether it is generous WALK IN solutions, angled niches or sloped ceilings you will always find a suitable solution with Artweger 360 - made to measure.

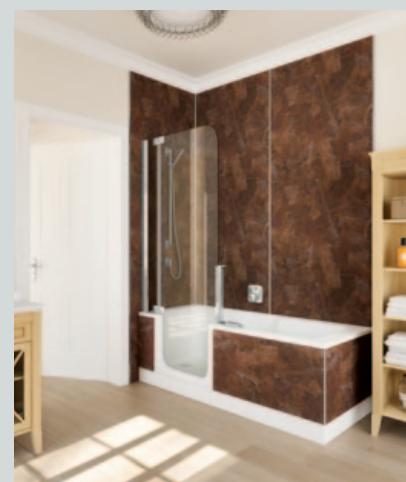
Special heights, asymmetrical rooms or unusual design are also possible in series design with Artweger 360. The 360° TWIN hinge opens up additional possibilities.

ARTWALL



ARTWALL

RAPID RENOVATION: ARTWALL is a modern wall system for bathroom renovation. ARTWALL wall panels are adhered directly onto existing tiles or brick wall; time-consuming retiling is not necessary. ARTWALL was developed especially for wet rooms and therefore ideal for bathroom renovation. ARTWALL is also suitable as tub skirting for the TWINLINE. Current colors and deco under www.artweger.at/artwall





The new 360° TWIN hinge which is registered for patent has the same narrow, elegant appearance as the wing door hinge...



...but when the door is opened it shows its hidden qualities. The doors can be opened up to 180° outwards and inwards.



A special raise and lower mechanism makes opening and closing the revolving, and the swing, shower door easier.



In the case of the 360° TWIN hinge a second pivot allows the door to be opened inwards. The hinges are adhered to the outside of the glass.



In the case of partially framed models the vertical silicone joints are concealed behind narrow strips. The shower looks brand new even after years.



In the case of frameless models the transparent glass elements reach right up to the wall. Narrow wall brackets provide strong, secure stability.

EVERYTHING REVOLVES AROUND

EXCLUSIVE DETAILS

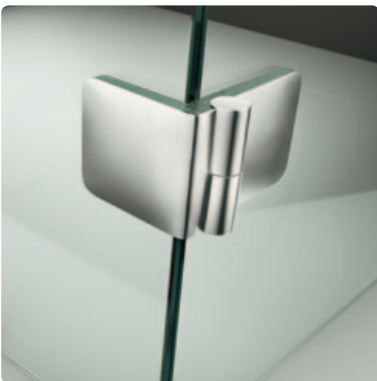
Artweger
360



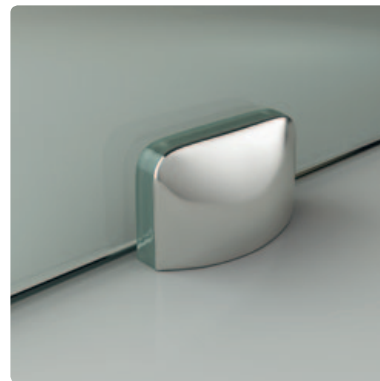
The 360° TWIN hinge can also be mounted directly on a wall.



The inner surfaces of the glass with wing door hinges remain completely smooth and especially easy to clean thanks to the hinges being adhered to the outside surface.



Models with one or two side walls of glass are strongly connected by way of a special 90° corner connector. These elements are also adhered to the outside of the glass by way of certified adhesion technology.



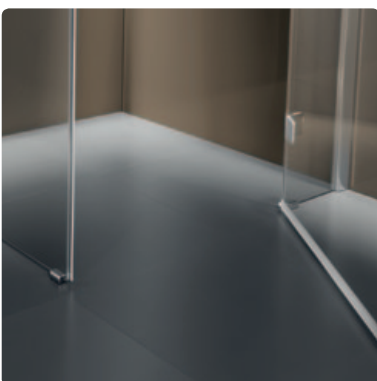
The unobtrusive floor elements of the Artweger 360 Walk In ensure that the glass elements do not touch the floor. That protects the glass from damage.



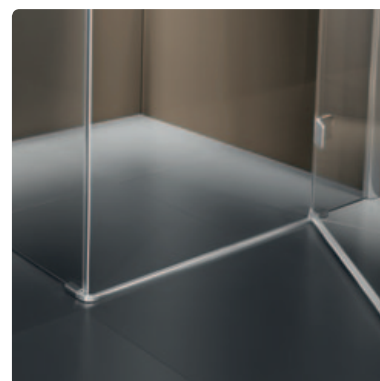
On request a bracket for external mounting can be delivered.



Narrow, round stabilizers are in use in standard models.



VARIO sealing system: You decide whether you want 100% flush to floor access without a surge bar...



... or with an unobtrusive 12 mm high surge bar for improved water-tightness around the door.



Artweger
360

ARTWEGER 360 WALK IN

The Artweger 360 Walk In is probably the most exclusive possibility for having an open shower area: elegant design with discreet fittings that seem to float in front of the glass surfaces and many possible combinations with anchored and swinging side parts – an Artweger Walk In provides unlimited enjoyment of your shower in large and also small bathrooms.



In the Artweger 360 Walk In the transparent glass surfaces reach to the wall, securely held by elegant fittings.

Artweger®



*Artweger 360 Walk In
without side screen with rod
fastened to ceiling, frameless*



Artweger 360 Walk In without side wall, partially framed



Artweger 360 Walk In curved, frameless

WALK IN

ARTWEGER 360 WALK IN

Classic Walk In solutions consist of a large glass wall. Here too, Artweger 360 provides something extra: fittings which are adhered to the outside that make cleaning much easier as well as unobtrusive floor anchor elements that prevent the glass from touching the floor. That prevents damage to the glass and gives you an extra element of safety.

Without side wall



FRAMELESS (fig. left)

Customized solutions, glass width 70-140 cm

Height: 200 cm

Special sizes, sloped side walls, cutouts on request.



PARTIALLY FRAMED (fig. bottom left)

Dimensions: glass width 100, 120, 140 cm

Height: 200 cm

Special sizes, sloped side walls, cutouts on request.

ACCESSORY: Moving splash protection wings, 30 cm wide (fig. page 46)

Without side screen with rod fastened to ceiling



FRAMELESS (fig. top left)

Customized solutions, glass width 70-140 cm

Height: 200 cm

Special sizes, sloped side walls, cutouts on request.



Curved



FRAMELESS (fig. bottom right)

Dimensions: glass width 130 cm

Height: 200 cm



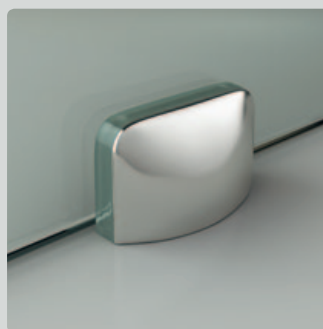


Artweger 360 Walk In with side wall and corner part

Technology and design



The 90° glass connectors are securely adhered on the outside of the glass. The inner surfaces of the glass remain smooth and easy to clean.



Attractive floor elements of the Artweger 360 Walk In ensure that the glass elements do not touch the floor. That protects the glass from damage.



In the case of a partially framed 360 Walk In (page 42) the glass wall stands securely on a transparent plastic profile.

WALK IN

ARTWEGER 360 WALK IN

To make sure that the water remains in the area foreseen for it when showering Artweger 360 Walk In models can be combined with various additional splash protection elements. Do you have special requests over and above these? Sloped panels, glass cutouts, or special sizes and heights can also be realized individually.

Without a side wall with corner part (no photo)



FRAMELESS

Customized solutions, glass width 70-140 cm
Glass width corner element: 30cm
Height: 200 cm



With side wall (no photo)



FRAMELESS

Customized solutions, glass width 70-140 cm, side screen 70-90 cm
Height: 200 cm



ACCESSORY: Moving splash protection wings, 30 cm wide (fig. page 46)

With side wall and corner part (photo left)



FRAMELESS

Customized solutions, glass width 70-140 cm, side screen 70-90 cm
Glass width corner element: 30 cm
Height: 200 cm





Top: Artweger 360 Walk In free-standing, frameless

Bottom: Artweger 360 Walk In free-standing with 2 swinging splash protection wings, frameless



WALK IN

ARTWEGER 360 WALK IN

Walk In solutions are becoming ever more popular. They provide a great deal of freedom of movement and easy access. A real eye-catcher in a generous bathroom is this Walk In which can be entered from either side. For additional splash protection anchored or swinging side parts can be added if desired.

Free-standing

FRAMELESS (Figs top left)

*Customized solutions, glass width 70-140 cm
Height: 200 cm*



ACCESSORIES: (Figs bottom left)

1 or 2 swinging splash protection wings, 30 cm wide



Free-standing with 2 anchored corner parts

(no photo, see page 44 for corner part)

FRAMELESS (no photo, corner part see page 44)

*Customized solutions, glass width 70-140 cm
Glass width corner element: 30 cm
Height: 200 cm*



Artweger®



Artweger 360 Walk In VARIO, frameless



Artweger 360 Walk In VARIO,
swinging glass part
folded inwards



Artweger 360 Walk In VARIO,
swinging glass part
folded outwards

WALK IN

ARTWEGER 360 WALK IN VARIO

The Artweger 360 Walk In VARIO from Artweger makes modern Walk In solutions for small rooms where open showers were not possible until now, possible for the first time. The Artweger 360 Walk In VARIO combines an anchored glass part with a 360° revolving glass part. In this way a generous Walk In solution with sufficient splash protection is achieved. The revolving part can be opened 180° inwards and outwards which means full freedom of movement in the bathroom; even in a small one.

Vario



FRAMELESS (figs left)

With a 360° revolving door, 50 cm wide

Customized solutions

Height: 200 cm



1 = 55-130 cm
3 = 50 cm

Vario with side wall (no photo, side wall see page 44)



FRAMELESS

With a 360° revolving door, 50 cm wide

Customized solutions

Height: 200 cm



1 = 55-130 cm
2 = 70-90 cm
3 = 50 cm



Artweger
360

SLIDING DOOR

The sliding doors of the ARTWEGER 360 which are guided on the floor make this model incomparably stable and lend it a surprisingly light look. This feeling of lightness and transparency is created by the discreet profiles and a lot of glass and is heightened even more by the special combination of materials for the handles and the fittings: they seem to float in front of the surface of the glass.



*The Artweger 360 sliding door models are floor-guided.
That brings stability and smooth running.*

Artweger®



2-part sliding door in a niche, handle vertical

SLIDING DOOR

IN NICHE

The sliding door in a niche has its own special advantage: the door requires no space to open outwards. Therefore it is a practical solution for narrow bathrooms or angled shower areas. Thanks to the 4-point guidance (see page 58) the sliding doors can even be installed in niches with a width of up to 2 meters.

Two-part (fig. left)

FRAMELESS

Dimensions: 100, 120, 140, 160 cm

Access width: 38-72 cm

Height: 200 cm



Four-part (Photo previous double page)

FRAMELESS

Dimensions: 160, 180, 200 cm

Access width: 61-86 cm

Height: 200 cm





2-part sliding door with side wall, knob handle, towel rail

SLIDING DOOR

WITH SIDE WALL

The sliding doors of the Artweger 360 slide smoothly and very quietly over rollers on ball bearings on the narrow tracks. The 4-point guidance of the doors of these models provides them with special stability which means that even larger showers are possible with sliding doors. Choose between with or without VARIO sealing system.

FRAMELESS

Dimensions: 100, 120, 140 cm

Access width: 38-60 cm

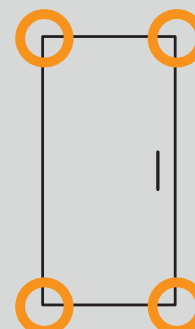
Height: 200 cm



Technology
and design

THE 4-POINT GUIDANCE

With a light tap of the finger the sliding door of the Artweger 360 begins to move smoothly. One can feel the great stability of this floor-guided door. Nothing is to be heard, nothing wobbles unexpectedly, not even when the doors are very wide. This stability is enabled by the doubly secure guidance of the sliding doors. On the one hand they are guided by two rollers over the tracks on the floor, on the other hand at the top they run over a guiding track. In this way the doors become especially stable and can be easily and safely slid back and forth. The drawing on the right represents the 4-point guidance.





Corner access with sliding doors, bow handles

SLIDING DOOR

CORNER ACCESS

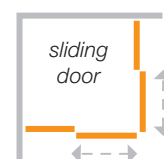
The corner access offers a practical solution for small and larger shower areas. The guiding track on the floor fulfils the standard for being barrier-free at a height of only 6 mm. Thanks to the VARIO sealing system you can choose between the barrier-free solution and a 12 mm surge bar which provides additional water-tightness around the door.

FRAMELESS

Dimensions: 80x80 cm, 90x80 cm, 100x80 cm, 90x90 cm, 100x100 cm, 120x120 cm

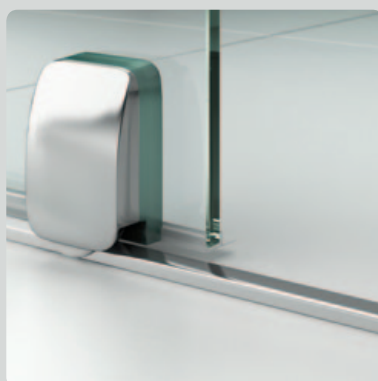
Access width: 40-71 cm

Height: 200 cm



It's your choice

VARIO sealing system:
Choose between the barrier-free 6 mm guiding track and a 12 mm surge bar for additional water-tightness.

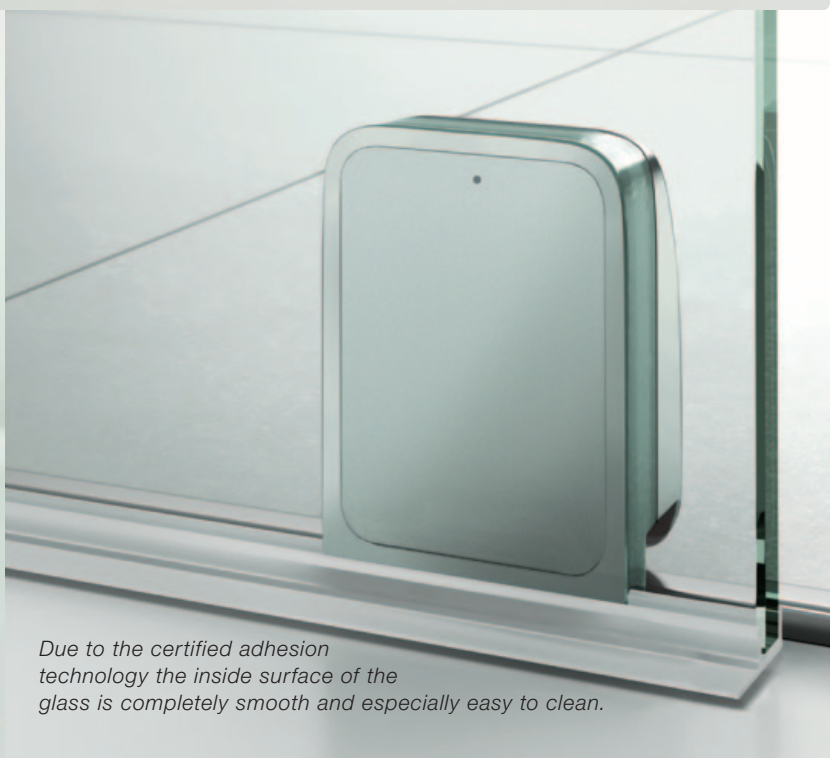




The floor guidance of the Artweger 360 sliding doors has many advantages which are not available with any other system. The whole weight of the glass doors rides safely along the bottom guiding track, the sliding doors glide smoothly along this narrow track for the width of the whole door. In this way wide doors are also possible and stability remains because the glass panels of the doors are secured at all 4 corners. This 4-point guidance always guarantees exact and especially smooth opening and closing of the sliding doors. There is also an additional practical effect. Due to the VARIO sealing system the unobtrusive floor track (or the slightly higher surge bar) helps keep any splashed water within the shower.



Exterior roller system: Clean, elegant lines distinguish the appearance of the Artweger 360.



Due to the certified adhesion technology the inside surface of the glass is completely smooth and especially easy to clean.

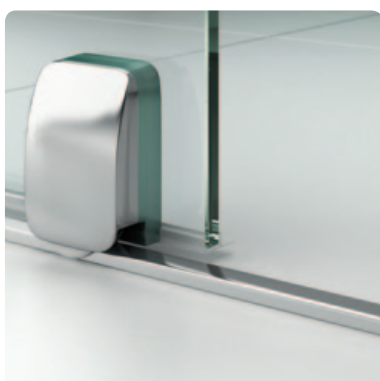
EVERYTHING REVOLVES AROUND
SUPERIOR
FUNCTIONALITY



A motion damper integrated in the upper guidance profile brakes the door gently when it is opened.



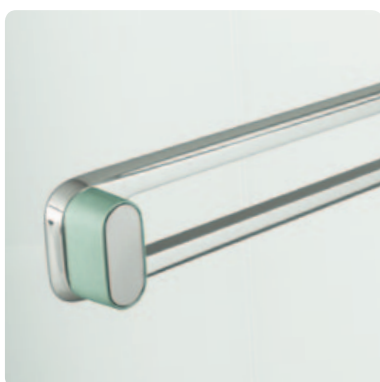
The Artweger 360 sliding doors glide along the guiding track on high quality ball bearings. Due to this, incomparable smoothness is achieved.



*VARIO sealing system 1:
The floor track provides perfectly smooth running and protects the floor outside from water which could escape. Due to the minimal height of the track at only 6 mm it fulfills the standard for being barrier-free.*



*VARIO sealing system 2:
For the very best sealing around the door a 12 mm surge bar can be inserted.*



This practical towel rail also presents itself in the elegant Artweger 360 design.



The towel rail of the Artweger 360 is adhered to the outside of the glass by way of our certified adhesion technology. It can also be mounted on a wall with an additional adapter.



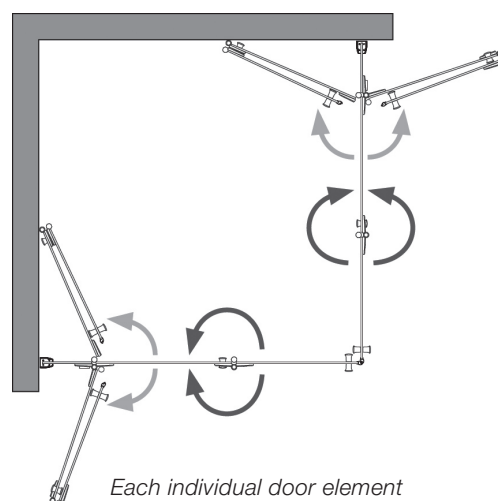
Corner access with folding doors, partially framed, knob handle

Artweger 360

A fold-away shower

FOLDING DOOR

Artweger 360 folding doors enable fine, space-saving solutions. The doors can be simply folded away and that in all directions due to the new 360° TWIN hinge. This hinge allows all the door elements to be folded inwards or outwards by 180°. In this way additional freedom of movement in the bathroom is created! Thanks to Artweger adhesion technology these foldaway doors are especially easy to clean.



*Each individual door element
can be folded outwards or inwards.*



Corner access with folding doors, partially framed, knob handle, with one half of the door folded inwards

Folding door U-form assembly, partially framed, handle horizontal,

Folding door U-form assembly, folded away



A fold-away shower

FOLDING DOOR

The folding doors of the ARTWEGER 360 can simply be folded away inwards or outwards and the shower area becomes part of the extended bathroom. This is ideal for small bathrooms! Due to the flexible folding elements and barrier-free access this model is also suitable for wheelchairs! So that the folding doors can be folded away especially compactly, these models are only available with knob handle.

Corner access



PARTIALLY FRAMED

(Figs top left and bottom left as well as previous two pages)

Dimensions: 80x80 cm, 90x90 cm, 100x100 cm, 120x120 cm

Height: 200 cm

Access width: 79-136 cm



Folding door U-form assembly

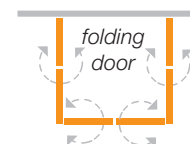


PARTIALLY FRAMED (fig. bottom left)

Dimensions: bis 100x100 cm

Height: 200 cm

Installation on straight wall.





Folding door in alcove, 2-part, partially framed, knob handle



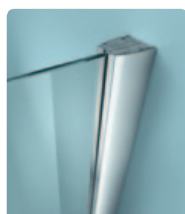
Folding door in alcove, 4-part, partially framed, knob handles

A fold-away shower

FOLDING DOOR

The ideal solution for wide access in niches. Due to the two-part folding door this type of door only requires a small amount of space for opening and shutting. This enables it to be moved conveniently even in restricted spaces. If the doors are not in use they can be completely folded away.

Folding door in alcove, 2-part

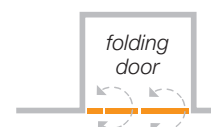


PARTIALLY FRAMED (fig. top left)

Dimensions: 75 cm, 80 cm, 90 cm, 100 cm, 120 cm

Height: 200 cm

Access width: 54-96 cm



Folding door in alcove, 4-part (fig. bottom left)

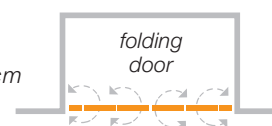


PARTIALLY FRAMED

Dimensions: 150 cm, 160 cm, 170 cm, 180 cm, 190 cm, 200 cm

Height: 200 cm

Access width: 106 - 153 cm

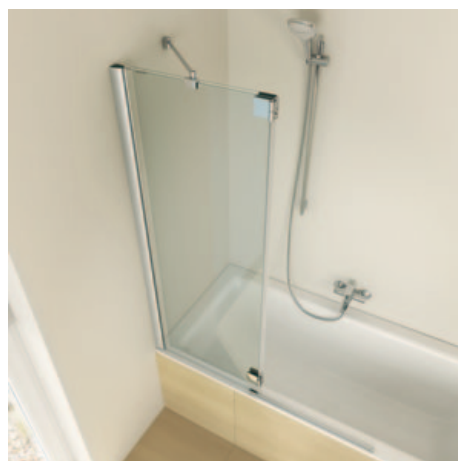
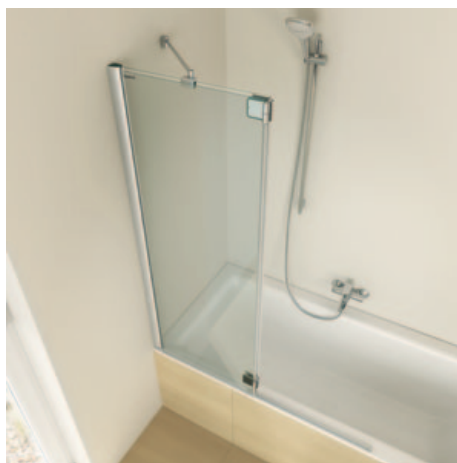




1-part folding wall with stable, anchored part,
profile color high gloss metal, genuine light glass



1-part folding wall with stable, anchored part, extra-wide, including stabilizer,
profile color high gloss metal, genuine light glass



...zum Wegfalten

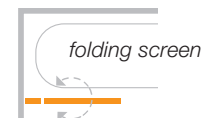
TUB FOLDING SCREEN

The practical addition for mounting on your bathtub. In elegant genuine glass with one anchored part and one moveable glass part. Thanks to the 360° TWIN hinge the moveable glass part can be turned inwards or outwards by up to 180°.

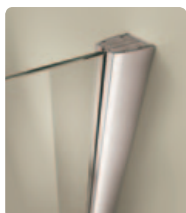
Single folding screen with fixed part



PARTIALLY FRAMED (fig. top left)
Dimensions flexible glass: 66 cm
Total length: 88-90 cm
Height: 150 cm



Single folding screen with fixed part, extra wide

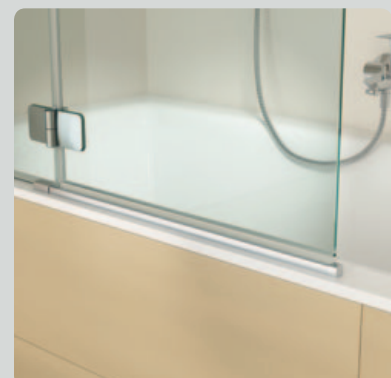
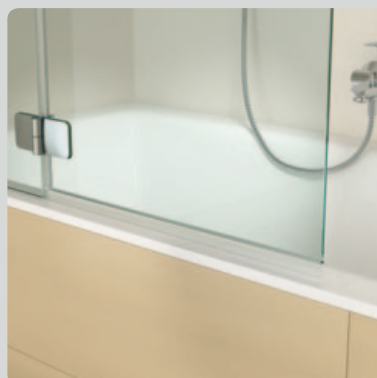


PARTIALLY FRAMED (fig. bottom left)
Dimensions flexible glass: 56 cm
Total length: 118-120 cm
Height: 150 cm

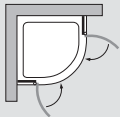
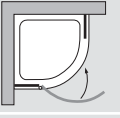
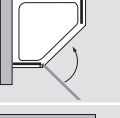
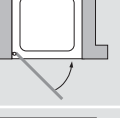
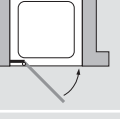
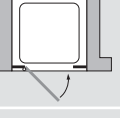
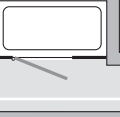

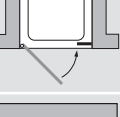
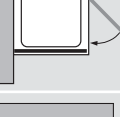
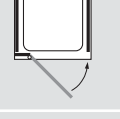
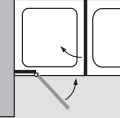
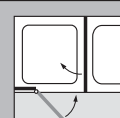
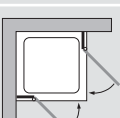


It's your choice

VARIO sealing system:
Choose between the barrier-free 6 mm guiding track and a 12 mm surge bar for additional water-tightness.



ARTWEGER 360 WINGED DOOR OR SWINGING DOORS

Shower enclosures		Door type	Winged door	Swinging door	Shower tray measurements in cm	Access widths in cm
1/4-round shower 2 door parts, 2 fixed parts		frameless	x	x	Made to measure 80x80 up to max. 100x100	85 - 100
		partially framed	x	x	80x80, 90x90, 100x100, 90x80, 100x90	85 - 100
1/4-round shower 1 door part, 2 fixed parts		frameless	x		Made to measure 80x80 bis max. 100x100	60 - 65
		partially framed	x		80x80, 90x90, 100x100, 90x80, 100x90	60 - 65
Pentagonal shower		frameless	x		Made to measure 90x90 bis max. 100x100	59-66
		partially framed	x		90x90, 100x100	59-66
Door in niche 1 door part, without fixed part		frameless		x	Made to measure, width up to max. 90	bis 82
Door attached on fixed part in alcove 1 door part, 1 fixed part		frameless	x	x	Made to measure, width up to max. 100	bis 68
		partially framed	x	x	Niche width 75, 80, 90, 100	53 - 68
Door attached on fixed part in alcove 1 door part, 2 fixed parts		frameless	x	x	Made to measure, width up to max. 140	bis 63
		partially framed	x	x	Niche width 90, 100, 120	53 - 69
Door attached on fixed part in alcove extra wide 1 door part, 2 fixed parts		frameless	x	x	Niche width 140, 150, 160, 170, 180	bis 68
Door attached on fixed part in alcove 2 door parts, 2 fixed parts		frameless		x	Made to measure, width up to max. 180	bis 117
		partially framed		x	Niche width 140, 150, 160, 170, 180	97 - 117
Door attached on fixed part in alcove 1 door part, 1 fixed part		frameless		x	Made to measure, width up to max. 140	bis 68
Door attached to side screen 1 door part, 1 fixed part		frameless	x	x	Made to measure, width up to max. 120	bis 68
		partially framed	x	x	80, 90, 100, 120	58 - 68
Door attached to fixed part and 2 side screens		frameless	x	x	Made to measure, width up to max. 100	bis 68
		partially framed	x	x	90, 100	63 - 68
Door attached to fixed part and shortened side screen		frameless	x	x	Made to measure, width up to max. 100	bis 68
		partially framed	x	x	80, 90, 100	58 - 68
Door attached on fixed part with swinging side screen		frameless		x	Made to measure, width up to max. 90x90	bis 68
		partially framed		x	80x80, 90x90, 90x75, 90x80	58 - 68
Corner access 2 door parts, 2 fixed parts		frameless	x	x	Made to measure, width up to max. 100 x 100	bis 85
		partially framed	x	x	80x80, 90x90, 100x100, 90x75, 90x80	70 - 85

ARTWEGER 360 WALK IN

Shower enclosures		Door type		Glass width in cm
Artweger 360 WALK IN free-standing		frameless		70 - 140
Artweger 360 WALK IN free-standing with corner element, 30 cm		frameless		70 - 140
Artweger 360 WALK IN without side screen with corner element 30 cm		frameless *		70 - 140
Artweger 360 WALK IN with side screen		frameless *		1 70 - 140 2 side screen 70 - 90
Artweger 360 WALK IN with side screen and corner element 30 cm		frameless *		1 70 - 140 2 side screen 70 - 90
Artweger 360 WALK IN without side screen		rahmenlos partially framed		70 - 140 100, 120, 140
Artweger 360 WALK IN rounded		frameless		130
Artweger 360 WALK IN VARIO without side screen		frameless *		55 - 130 1 VARIO part 50
Artweger 360 WALK IN VARIO with side screen		frameless *		1 55 - 130 VARIO part 50 2 side screen 70 - 90
Artweger 360 WALK IN without side screen with rod fastened to ceiling		frameless *		70 - 140

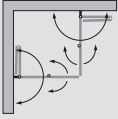
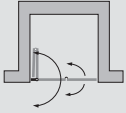
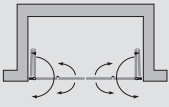
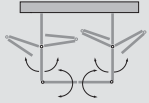


* These WALK IN models are on request also available in partially framed version with Artweger 360 wall profiles.

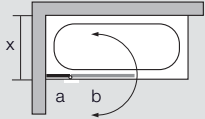
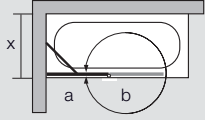
ARTWEGER 360 SLIDING DOORS

Shower enclosures		Door type		Glass width in cm
2-part sliding door in alcove 1 sliding door and 1 fixed part		framed	100, 120, 140	38-72
4-part sliding door in alcove 2 sliding doors and 2 fixed parts		framed	160, 180, 200	61-86
2-part sliding door and one side wall 1 sliding door and 1 fixed part		framed	100, 120, 140	38-60
Corner access 2 sliding doors and 2 fixed parts		framed	80x80, 90x90, 100x100, 120x120, 90x80, 100x80	40-71

ARTWEGER 360 FOLDING DOORS

Shower enclosures	Door type	Shower tray measurements in cm	Access widths in cm
Corner access 	partially framed	80x80, 90x90, 100x100, 120x120	79 - 136
Double folding door in alcove 	partially framed	75, 80, 90, 100, 120	54 - 96
Quadruple folding door in alcove 	partially framed	150, 160, 170, 180, 190, 200	106 - 153
Folding door U-form assembly 	partially framed	bis 100x100	

ARTWEGER 360 TUB FOLDING SCREEN

Shower enclosures		Width of folding part in cm	Width of folding pieces in cm	Depth
1-part folding wall with stable 	partially framed Standard height 150 cm Triangular cut-out on request.	$a = 23,5$ $b = 66$	88 - 90	$x = 71$
1-part folding wall with stable, anchored part, extra-wide, including stabilizer 	partially framed Standard height 150 cm Triangular cut-out on request.	$a = 63,5$ $b = 56$	118 - 120	$X = 61$

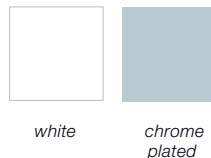
FRAME COLORS, GLASS

Profile colors (partially framed and framed models):

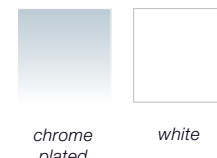


Further colors on request.

Profile colors (frameless models):



Hinges and handles:



For partially framed models also in the selected profile color.

Singel pane safety glass:



Genuine glass clear

Fully frosted or a frosted strip
Satin, surface complète

Single-pane safety glass (ESG).

In the Artweger 360 special heat-treated safety glass (EN 12150) is used, which is more impact-, shock- and temperature-resistant. If the glass breaks then little crumbs are created which greatly reduces the possibility of injury.

6 mm ESG: Swinging and wing doors, folding doors

8 mm ESG: Walk In, sliding doors



INDIVIDUAL SEAT

Seat with high-quality, easy-to-clean surface, available in the colours Anthracite (RAL 7021), Bordeaux (RAL 3011), and Sand (RAL 1015). Folding, held securely by magnet when folded up. Integrated motion damper for smooth folding down.

Variations: **Individual seat** with backrest, height 50 cm, width 38.5 cm, depth 7/9 cm.

EVERYTHING REVOLVES AROUND

GUARANTEED QUALITY

INNOVATIVE ADHESIVE TECHNOLOGY.

On Artweger shower enclosures with this certificate the hinges are bonded to the outside of the glass. This technology was developed together with leading adhesive specialists and permanently undergoes strictest security and quality controls. The load capacity of the adhesive contact is several 1000 kg. That means greatest possible safety even after many years.



GUARANTEED QUALITY FOR MANY YEARS

With ARTWEGER products you get a 5-YEAR FACTORY GUARANTEE. Optimised manufacturing processes and strict quality assurance make this possible. With this service we place our attention on uncompromising quality with no ifs, buts and ors. With ARTWEGER's 10-YEAR AVAILABILITY GUARANTEE you have guaranteed security for many years.



via your Artweger Guarantee Partner.

GUARANTEED SECURITY

At Artweger not only the materials used are put to the acid test, but also the manufacturing processes and the functionality of the products. Regular watertightness and impact tests as well as long-term load tests guarantee continuously high quality.



CLEAR & CLEAN

Showers that have this seal are user-friendly and provide certain technical details such as flush and completely smooth surfaces. These details as well as the use of ARTCLEAN make cleaning of ARTWEGER showers especially easy.

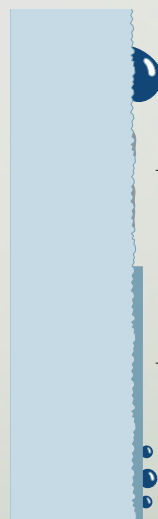


Simply clean.
Simply pure.



ART-CLEAN

The Artweger ART-CLEAN glass treatment makes cleaning genuinely easier. Through a special coating the glass surface becomes extremely smooth. Dirt and lime deposits can hardly find a hold. The glass stays brilliantly clear longer.

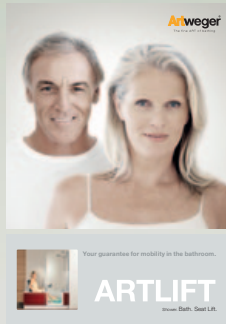


WITHOUT ART-CLEAN

- Water on untreated surface
- Lime deposits make glass dull

WITH ART-CLEAN

- ART-CLEAN coating: for lasting protection
- Water and lime deposits cling less readily. The glass stays shiny and clear with regular use.



The easiest way to get to know the complete ARTWEGER range.
Simply order free brochures or download them as pdf at: www.artweiger.com

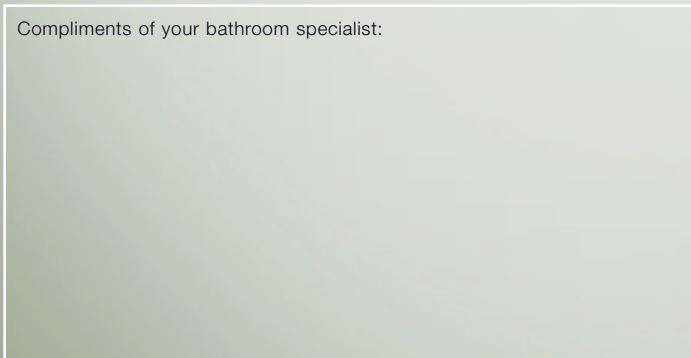
Artweiger GmbH. & Co. KG

Sulzbacherstraße 60, Tel. +43 6132 205-0,
Fax +43 6132 25034, info@artweiger.at, www.artweiger.at

Artweiger UK

The Sidings Thomas Street,
Blackpool, FY6 7QQ Lancashire, Tel: +44 333 666 1260,
Fax: +44 333 666 1261, infouk@artweiger.co.uk

Compliments of your bathroom specialist:



LEGAL: Responsible for contents: Artweiger GmbH. & Co. KG
Conception: Mag. Karl Frauscher, graphics: Walter Kritzinger, designverein,
Photos: Manfred Lang. Our thanks go to hansgrohe.

Technical changes and typographical errors reserved.

Artweiger®

The fine ART of bathing

Artweiger
360
*Everything revolves
around the shower*

Art.-Nr.: DP 51ENE0 2. Aufl. 4/2016